

# Stuffing Boxes

INFORMATION COMMANDES

 01 43 83 05 59

 01 43 83 96 76

E-mail : [info@alphaver.com](mailto:info@alphaver.com) • Site web : [www.alphaver.com](http://www.alphaver.com)

## Air–Water–Grease Service Dimensional Data



Alphaver Marine-Industrie-Equipements

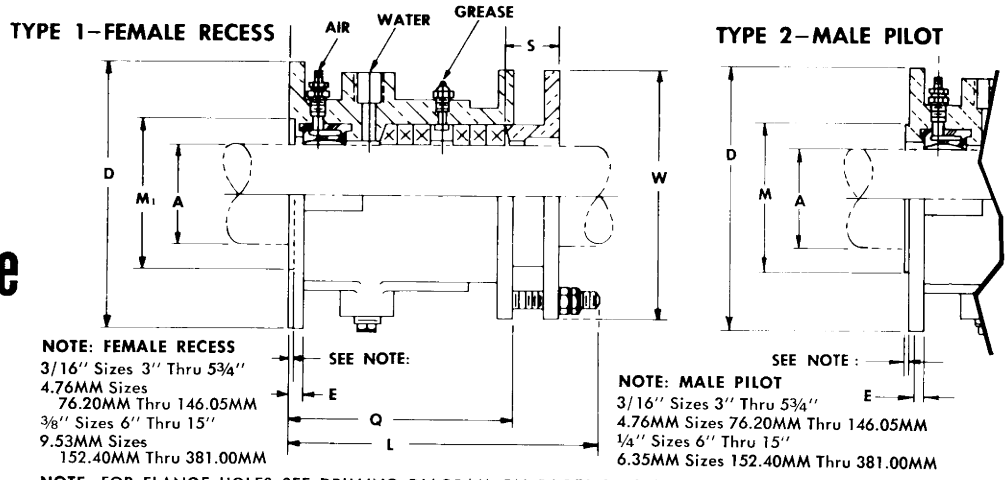
Immeuble Le Colbert • 2 rue Le Corbusier • 95190 Goussainville

Tél. : +33 (0)1 43 83 05 59 • Port. : +33 (0)6 67 65 10 43 • Fax : +33 (0)1 43 83 96 76 • E-mail : [info@alphaver.com](mailto:info@alphaver.com)

**DURAMAX® MARINE** LLC



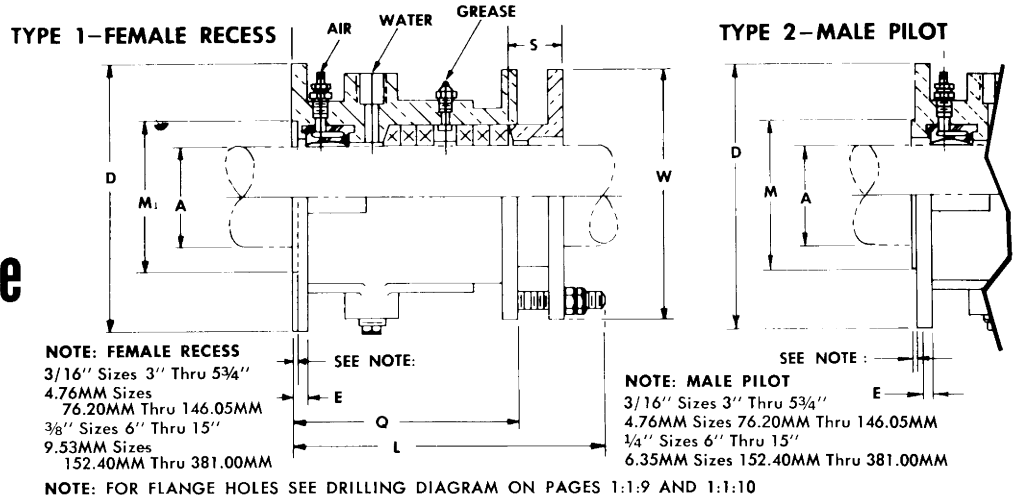
# Forward Stern Tube Stuffing Box With "Air Seal" Ring Dimensions - (FIG. 1786IR AIR WATER-GREASE SERVICE)



A	FIG. 1786 AND CODE NO.		D	E	M	M <sub>1</sub>	Q	L	S	W	PACKING O.D.	PACKING SIZE	NO. OF PACKING RINGS
	WITH FEMALE RECESS FOR FLANGE BEARING TYPE 1	WITH MALE PILOT FOR DBA-2 ASSEMBLY TYPE 2											
INCHES MM	J.R. PART No. 260000	J.R. PART No. 260000	INCHES MM	INCHES MM	INCHES MM	INCHES MM	INCHES MM	INCHES MM	INCHES MM	INCHES MM	INCHES MM	INCHES MM	
3 76.20	0300	246 247	7 1/2 190.50	3/16 11.11	4 1/2 114.30	4 3/4 120.65	6 5/16 160.34	8 1/2 215.90	1 7/16 36.51	7 177.80	4 101.60	1 1/2 12.70	6
3 1/4 82.55	0314	250 —	7 1/2 190.50	3/16 11.11	—	4 3/4 120.65	6 5/16 160.34	8 1/2 215.90	1 7/16 36.51	7 177.80	4 1/4 107.95	1 1/2 12.70	6
3 1/2 88.90	0312	254 255	8 1/8 206.38	5/8 15.88	4 1/2 114.30	5 1/4 133.35	6 5/16 160.34	8 11/16 220.66	1 5/8 41.28	7 5/8 193.68	4 1/2 114.30	1 1/2 12.70	6
3 3/4 95.25	0334	258 —	8 1/8 206.38	5/8 15.88	—	5 1/4 133.35	6 5/16 160.34	8 11/16 220.66	1 5/8 41.28	7 5/8 193.68	4 3/4 120.65	1 1/2 12.70	6
4 101.60	0400	262 263	8 5/8 219.08	5/8 15.88	5 1/2 139.70	5 3/4 146.05	6 5/16 160.34	8 11/16 220.66	1 5/8 41.28	8 1/8 206.38	5 127.00	1 1/2 12.70	6
4 1/4 107.95	0414	266 267	8 5/8 219.08	5/8 15.88	5 1/2 139.70	5 3/4 146.05	6 5/16 160.34	8 11/16 220.66	1 5/8 41.28	8 1/8 206.38	5 1/4 133.35	1 1/2 12.70	6
4 1/2 114.30	0412	270 271	9 3/8 238.13	1 1/16 20.64	6 1/8 155.58	6 1/2 165.10	7 7/16 185.74	9 15/16 252.41	1 7/8 47.63	8 7/8 225.43	5 3/4 146.05	5/8 15.88	6
4 3/4 120.65	0434	274 275	9 3/8 238.13	1 1/16 20.64	6 1/8 155.58	6 1/2 165.10	7 7/16 185.74	9 15/16 252.41	1 7/8 47.63	8 7/8 225.43	6 152.40	5/8 15.88	6
5 127.00	0500	278 279	10 7/8 257.18	1 3/16 20.64	6 1/2 165.10	7 1/4 184.15	8 3/8 217.49	11 13/16 303.21	2 3/8 60.33	9 5/8 244.48	6 1/2 165.10	3/4 19.05	6
5 1/4 133.35	0514	282 283	10 7/8 257.18	1 3/16 20.64	6 1/2 165.10	7 1/4 184.15	8 3/8 217.49	11 13/16 303.21	2 3/8 60.33	9 5/8 244.48	6 3/4 171.45	3/4 19.05	6
5 1/2 139.70	0512	286 287	10 5/8 269.88	1 3/16 20.64	7 1/2 190.50	7 3/4 196.85	8 3/8 217.49	11 13/16 303.21	2 3/8 60.33	10 1/8 257.18	7 177.80	3/4 19.05	6
5 3/4 146.05	0534	290 291	10 5/8 269.88	1 3/16 20.64	7 1/2 190.50	7 3/4 196.85	8 3/8 217.49	11 13/16 303.21	2 3/8 60.33	10 1/8 257.18	7 1/4 184.15	3/4 19.05	6
6 152.40	0600	294 295	11 3/8 288.93	1 3/16 20.64	8 203.20	8 203.20	8 3/4 222.25	12 3/4 323.85	3 76.20	11 1/8 282.58	7 1/2 190.50	3/4 19.05	6
6 1/4 158.75	0614	298 299	11 3/8 288.93	1 3/16 20.64	8 203.20	8 203.20	8 3/4 222.25	12 3/4 323.85	3 76.20	11 1/8 282.58	7 3/4 196.85	3/4 19.05	6
6 1/2 165.10	0612	302 303	13 1/2 342.90	7/8 22.23	8 1/2 215.90	8 9/8 219.08	9 3/4 247.65	13 3/4 349.25	3 76.20	12 1/8 307.98	8 1/4 209.55	7/8 22.23	6
6 5/8 168.28	0658	304 —	13 1/2 342.90	7/8 22.23	—	8 5/8 219.08	9 3/4 247.65	13 3/4 349.25	3 76.20	12 1/8 307.98	8 3/8 212.73	7/8 22.23	6
6 3/4 171.45	0634	306 307	13 3/4 349.25	7/8 22.23	8 1/2 215.90	9 228.60	9 3/4 247.65	13 3/4 349.25	3 76.20	12 1/2 317.50	8 1/2 215.90	7/8 23.23	6
6 7/8 174.63	0678	308 —	13 3/4 349.25	7/8 22.23	—	9 228.60	9 3/4 247.65	13 3/4 349.25	3 76.20	12 1/2 317.50	8 5/8 219.08	7/8 22.23	6
7 177.80	0700	310 311	13 3/4 349.25	7/8 22.23	9 1/4 234.95	9 228.60	9 3/4 247.65	13 3/4 349.25	3 76.20	12 1/2 317.50	8 3/4 222.25	7/8 22.23	6
7 1/8 180.98	0718	312 —	14 1/8 358.78	7/8 22.23	—	9 5/8 244.48	11 1/8 282.58	15 5/8 396.88	3 1/2 88.90	12 7/8 327.03	9 1/8 231.78	1 25.40	6
7 1/4 184.15	0714	314 315	14 1/8 358.78	7/8 22.23	9 1/4 234.95	9 5/8 244.48	11 1/8 282.58	15 5/8 396.88	3 1/2 88.90	12 7/8 327.03	9 1/4 234.95	1 25.40	6
7 3/8 187.33	0738	316 —	14 1/8 358.78	7/8 22.23	—	9 5/8 244.48	11 1/8 282.58	15 5/8 396.88	3 1/2 88.90	12 7/8 327.03	9 3/8 238.13	1 25.40	6
7 1/2 190.50	0712	318 319	14 1/2 368.30	7/8 22.23	10 1/4 260.35	10 254.00	11 1/8 282.58	15 5/8 396.88	3 1/2 88.90	13 1/4 336.55	9 1/2 241.30	1 25.40	6



# Forward Stern Tube Stuffing Box With "Air Seal" Ring Dimensions -



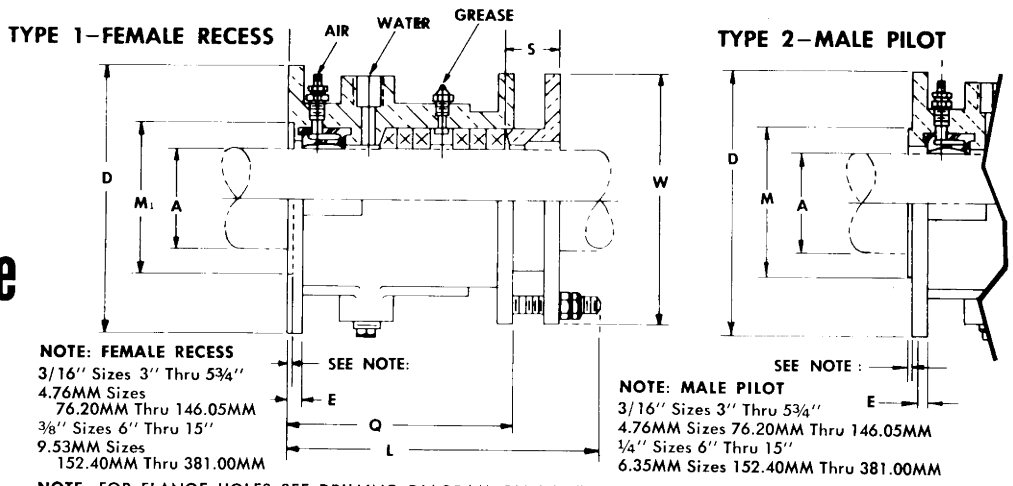
(FIG. 1786 IR AIR WATER-GREASE SERVICE)

A	O.D. SHAFT OR SLEEVE JOURNAL	FIG. 1786 AND CODE NO.	WITH FEMALE RECESS FOR FLANGE BEARING TYPE 1		WITH MALE PILOT FOR DBA-2 ASSEMBLY TYPE 2		D	E	M	M <sub>1</sub>	Q	L	S	W	PACKING O.D.	PACKING SIZE	NO. OF PACKING RINGS
			J.R. PART No. 260000	INCHES MM	INCHES MM	INCHES MM											
7 5/8	193.68	0758	320	—	14 1/2	7/8	—	10	11 1/8	15 5/8	3 1/2	13 1/4	9 5/8	1	25.40	6	
7 3/4	196.85	0734	322	323	14 1/2	7/8	10 1/4	10	11 1/8	15 5/8	3 1/2	13 1/4	9 3/4	1	25.40	6	
7 7/8	200.03	0778	324	—	14 7/8	7/8	—	10 3/8	11 1/8	15 5/8	3 1/2	13 5/8	9 7/8	1	25.40	6	
8	203.20	0800	326	327	14 7/8	7/8	10 1/4	10 3/8	11 1/8	15 5/8	3 1/2	13 5/8	10	1	25.40	6	
8 1/8	206.38	0818	328	—	14 7/8	7/8	—	10 3/8	11 1/8	15 5/8	3 1/2	13 5/8	10 1/8	1	25.40	6	
8 1/4	209.55	0814	330	331	15 1/4	7/8	11	10 3/4	11 1/8	15 5/8	3 1/2	14	10 1/4	1	25.40	6	
8 3/8	212.73	0838	332	—	15 1/4	7/8	—	10 3/4	11 1/8	15 5/8	3 1/2	14	10 3/8	1	25.40	6	
8 1/2	215.90	0812	334	335	15 1/4	7/8	11	10 3/4	11 1/8	15 5/8	3 1/2	14	10 1/2	1	25.40	6	
8 5/8	219.08	0858	336	—	15 5/8	1	—	11 1/8	11 1/8	15 5/8	3 1/2	14 3/8	10 5/8	1	25.40	6	
8 3/4	222.25	0834	338	339	15 5/8	1	11	11 1/8	11 1/8	15 5/8	3 1/2	14 3/8	10 3/4	1	25.40	6	
8 7/8	225.43	0878	340	—	15 5/8	1	—	11 1/8	11 1/8	15 5/8	3 1/2	14 3/8	10 7/8	1	25.40	6	
9	228.60	0900	342	343	16	1	11 3/4	11 1/2	11 1/8	15 5/8	3 1/2	14 3/4	11	1	25.40	6	
9 1/8	231.78	0918	344	—	16	1	—	11 1/2	11 1/8	15 5/8	3 1/2	14 3/4	11 1/8	1	25.40	6	
9 1/4	234.95	0914	346	347	16	1	11 3/4	11 1/2	11 1/8	15 5/8	3 1/2	14 3/4	11 1/4	1	25.40	6	
9 3/8	238.13	0938	348	—	16 3/8	1	—	11 7/8	11 1/8	15 5/8	3 1/2	15 1/8	11 3/8	1	25.40	6	
9 1/2	241.30	0912	350	351	16 3/8	1	11 3/4	11 7/8	11 1/8	15 5/8	3 1/2	15 1/8	11 1/2	1	25.40	6	
9 5/8	244.48	0958	352	—	16 3/8	1	—	11 7/8	11 1/8	15 5/8	3 1/2	15 1/8	11 5/8	1	25.40	6	
9 3/4	247.65	0934	354	355	16 3/8	1	12 3/4	12 3/8	11 1/8	15 5/8	3 1/2	15 1/2	11 3/4	1	25.40	6	
9 7/8	250.83	0978	356	—	16 3/8	1	—	12 3/8	11 1/8	15 5/8	3 1/2	15 1/2	11 7/8	1	25.40	6	
10	254.00	1000	358	359	16 3/8	1	12 3/4	12 3/8	11 1/8	15 5/8	3 1/2	15 1/2	12	1	25.40	6	
10 1/8	257.18	1018	360	—	17 7/8	1	—	12 3/4	11 3/4	16 1/4	3 1/2	16	12 1/8	1	25.40	6	
10 1/4	260.35	1014	362	363	17 7/8	1	12 3/4	12 3/4	11 3/4	16 1/4	3 1/2	16	12 1/4	1	25.40	6	
10 3/8	263.53	1038	364	—	17 7/8	1	—	12 3/4	11 3/4	16 1/4	3 1/2	16	12 3/8	1	25.40	6	



# Forward Stern Tube Stuffing Box With "Air Seal" Ring Dimensions -

(FIG. 1786 IR AIR WATER-GREASE SERVICE)



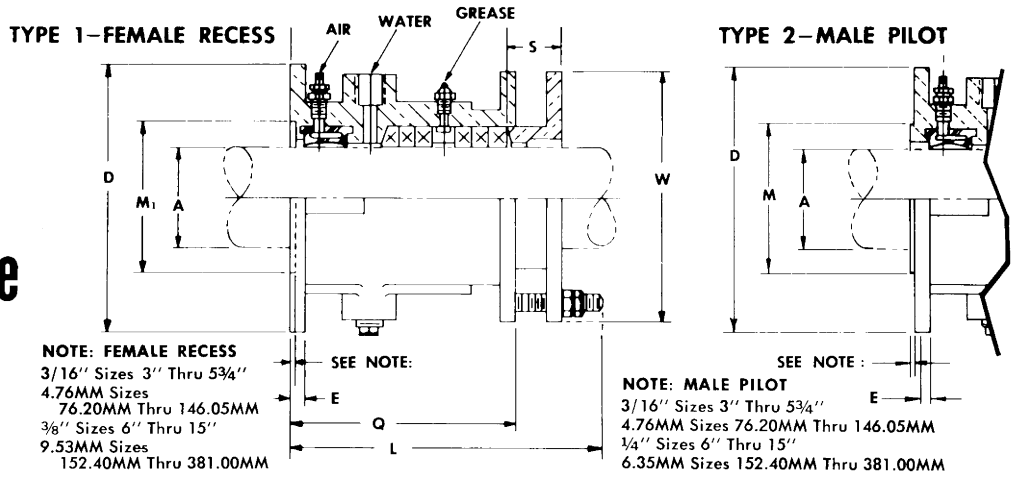
A	O.D. SHAFT OR SLEEVE JOURNAL	FIG. 1786 AND CODE NO.		TYPE 1		TYPE 2		D	E	M	M <sub>1</sub>	Q	L	S	W	PACKING O.D.	PACKING SIZE	NO. OF PACKING RINGS							
				WITH FEMALE RECESS FOR FLANGE BEARING		WITH MALE PILOT FOR DBA-2 ASSEMBLY																			
				J.R. PART No.	260000	INCHES	MM												INCHES	MM	INCHES	MM	INCHES	MM	INCHES
10 1/2	266.70	1012	366	367	18 1/4	463.55	1	25.40	13 3/4	349.25	13 1/8	333.38	11 3/4	298.45	16 1/4	412.75	3 1/2	88.90	16 3/8	415.93	12 1/2	317.50	1	25.40	6
10 5/8	269.88	1058	368	—	18 1/4	463.55	1	25.40	—	—	13 3/8	333.38	11 3/4	298.45	16 1/4	412.75	3 1/2	88.90	16 3/8	415.93	12 5/8	320.68	1	25.40	6
10 3/4	273.05	1034	370	371	18 1/4	463.55	1	25.40	13 3/4	349.25	13 1/8	333.38	11 3/4	298.45	16 1/4	412.75	3 1/2	88.90	16 3/8	415.93	12 3/4	323.85	1	25.40	6
10 7/8	276.23	1078	372	—	18 5/8	473.08	1	25.40	—	—	13 1/2	342.90	11 3/4	298.45	16 1/4	412.75	3 1/2	88.90	16 3/4	425.45	12 7/8	327.03	1	25.40	6
11	279.40	1100	374	375	18 5/8	473.08	1	25.40	13 3/4	349.25	13 1/2	342.90	11 3/4	298.45	16 1/4	412.75	3 1/2	88.90	16 3/4	425.45	13	330.20	1	25.40	6
11 1/8	282.58	1118	376	—	18 5/8	473.08	1	25.40	—	—	13 1/2	342.90	11 3/4	298.45	16 1/4	412.75	3 1/2	88.90	16 3/4	425.45	13 3/8	333.38	1	25.40	6
11 1/4	285.75	1114	378	379	19	482.60	1	25.40	14 1/2	368.30	13 7/8	352.43	11 3/4	298.45	16 1/4	412.75	3 1/2	88.90	17 1/8	434.98	13 1/4	336.55	1	25.40	6
11 3/8	288.93	1138	380	—	19	482.60	1	25.40	—	—	13 7/8	352.43	11 3/4	298.45	16 1/4	412.75	3 1/2	88.90	17 1/8	434.98	13 3/8	339.73	1	25.40	6
11 1/2	292.10	1112	382	383	19	482.60	1	25.40	14 1/2	368.30	13 7/8	352.43	11 3/4	298.45	16 1/4	412.75	3 1/2	88.90	17 1/8	434.98	13 1/2	342.90	1	25.40	6
11 5/8	295.28	1158	384	—	19 3/8	492.13	1	25.40	—	—	14 1/8	353.78	11 3/4	298.45	16 1/4	412.75	3 1/2	88.90	17 1/2	444.50	13 5/8	346.08	1	25.40	6
11 3/4	298.45	1134	386	387	19 3/8	492.13	1	25.40	14 1/2	368.30	14 1/8	353.78	11 3/4	298.45	16 1/4	412.75	3 1/2	88.90	17 1/2	444.50	13 3/4	349.25	1	25.40	6
11 7/8	304.63	1178	388	—	19 3/8	492.13	1	25.40	—	—	14 1/8	353.78	11 3/4	298.45	16 1/4	412.75	3 1/2	88.90	17 1/2	444.50	13 7/8	353.43	1	25.40	6
12	309.80	1200	390	391	19 3/4	501.65	1	25.40	15 1/2	393.70	14 1/2	368.30	11 5/8	295.28	16 3/8	415.93	3 3/4	95.25	17 7/8	454.03	14	355.61	1	25.40	6
12 1/8	307.98	1218	392	—	19 3/4	501.65	1	25.40	—	—	14 1/2	368.30	11 5/8	295.28	16 3/8	415.93	3 3/4	95.25	17 7/8	454.03	14 1/8	358.78	1	25.40	6
12 1/4	311.15	1214	394	395	19 3/4	501.65	1	25.40	15 1/2	393.70	14 1/2	368.30	11 5/8	295.28	16 3/8	415.93	3 3/4	95.25	17 7/8	454.03	14 1/4	361.95	1	25.40	6
12 3/8	314.33	1238	396	—	20 1/8	511.18	1 1/8	28.58	—	—	15 1/8	384.18	11 5/8	295.28	16 3/8	415.93	3 3/4	95.25	18 1/4	463.55	14 3/8	365.13	1	25.40	6
12 1/2	317.50	1212	398	399	20 1/8	511.18	1 1/8	28.58	15 1/2	393.70	15 1/8	384.18	11 5/8	295.28	16 3/8	415.93	3 3/4	95.25	18 1/4	463.55	14 1/2	368.30	1	25.40	6
12 5/8	320.68	1258	400	—	20 1/8	511.18	1 1/8	28.58	—	—	15 1/8	384.18	11 5/8	295.28	16 3/8	415.93	3 3/4	95.25	18 1/4	463.55	14 5/8	371.48	1	25.40	6
12 3/4	323.85	1234	402	403	20 1/4	520.70	1 1/8	28.58	16 1/4	412.75	15 1/2	393.70	11 5/8	295.28	16 3/8	415.93	3 3/4	95.25	18 5/8	473.08	14 3/4	374.65	1	25.40	6
12 7/8	327.03	1278	404	—	20 1/2	520.70	1 1/8	28.58	—	—	15 1/2	393.70	11 5/8	295.28	16 3/8	415.93	3 3/4	95.25	18 5/8	473.08	14 7/8	377.83	1	25.40	6
13	330.20	1300	406	407	20 1/2	520.70	1 1/8	28.58	16 1/4	412.75	15 1/2	393.70	11 5/8	295.28	16 3/8	415.93	3 3/4	95.25	18 5/8	473.08	15	381.00	1	25.40	6
13 1/8	333.38	1318	408	—	21	533.40	1 1/8	28.58	—	—	15 3/4	400.05	11 5/8	295.28	16 3/8	415.93	3 3/4	95.25	19 1/8	485.78	15 1/8	384.18	1	25.40	6
13 1/4	336.55	1314	410	411	21	533.40	1 1/8	28.58	16 1/4	412.75	15 3/4	400.05	11 5/8	295.28	16 3/8	415.93	3 3/4	95.25	19 1/8	485.78	15 1/4	387.35	1	25.40	6

Continued



# Forward Stern Tube Stuffing Box With "Air Seal" Ring Dimensions -

(FIG. 1786 IR AIR WATER-GREASE SERVICE)



A	O.D. SHAFT OR SLEEVE JOURNAL	FIG. 1786 AND CODE NO.		WITH FEMALE RECESS FOR FLANGE BEARING		TYPE 1		TYPE 2		STUFFING BOX FLANGE DIAMETER	STUFFING BOX FLANGE THICKNESS	MALE PILOT DIAMETER	FEMALE RECESS DIAMETER	STUFFING BOX LENGTH	OVERALL LENGTH	GLAND LENGTH	GLAND FLANGE DIAMETER	PACKING O.D.	PACKING SIZE	NO. OF PACKING RINGS				
				WITH MALE PILOT FOR DBA-2 ASSEMBLY		D	E	M	M <sub>1</sub>												Q	L	S	W
				J.R. PART No.	260000	INCHES MM	INCHES MM	INCHES MM	INCHES MM												INCHES MM	INCHES MM	INCHES MM	INCHES MM
13 3/8	339.73	1338	412	—	21	1 1/8	17 1/4	16 3/4	11 5/8	16 3/8	3 3/4	19 1/8	15 3/8	1	6									
13 1/2	342.90	1312	414	415	21 3/8	1 1/8	17 1/4	16 3/4	11 5/8	16 3/8	3 3/4	19 1/2	15 1/2	1	6									
13 5/8	346.08	1358	416	—	21 3/8	1 1/8	17 1/4	16 3/4	11 5/8	16 3/8	3 3/4	19 1/2	15 1/2	1	6									
13 3/4	349.25	1334	418	419	21 3/8	1 1/8	17 1/4	16 3/4	11 5/8	16 3/8	3 3/4	19 1/2	15 3/4	1	6									
13 7/8	352.43	1378	420	—	21 3/4	1 1/8	17 1/4	16 3/4	11 5/8	16 3/8	3 3/4	19 1/8	15 3/4	1	6									
14	355.60	1400	422	423	21 3/4	1 1/8	17 1/4	16 3/4	11 5/8	16 3/8	3 3/4	19 1/8	16	1	6									
14 1/8	358.78	1418	424	—	21 3/4	1 1/8	17 1/4	16 3/4	11 5/8	16 3/8	3 3/4	19 1/8	16 1/8	1	6									
14 1/4	361.95	1414	426	427	22 1/8	1 1/8	18 1/4	17 1/4	11 7/8	16 3/8	3 3/4	20 1/4	16 1/4	1	6									
14 5/8	365.13	1438	428	—	22 1/8	1 1/8	17 1/4	17 1/4	11 7/8	16 3/8	3 3/4	20 1/4	16 1/8	1	6									
14 1/2	368.30	1412	430	431	22 1/8	1 1/8	18 1/4	17 1/4	11 7/8	16 3/8	3 3/4	20 1/4	16 1/2	1	6									
14 7/8	371.48	1458	432	—	22 1/2	1 1/8	17 1/2	17 1/2	11 7/8	16 3/8	3 3/4	20 3/8	16 1/8	1	6									
14 3/4	374.65	1434	434	435	22 1/2	1 1/8	18 1/4	17 1/2	11 7/8	16 3/8	3 3/4	20 3/8	16 3/4	1	6									
14 7/8	377.83	1478	436	—	22 3/4	1 1/8	17 1/4	17 1/4	11 7/8	16 3/8	3 3/4	20 3/8	16 1/8	1	6									
15	381.00	1500	438	439	22 3/4	1 1/8	19	17 3/4	11 7/8	16 3/8	3 3/4	20 3/8	17	1	6									



# alphaver

**IMPORTATEUR & DISTRIBUTEUR**

Marine Industrie Equipements Depuis 1977



## **PROPULSION**

Hélices, arbres, étanchéités, paliers, paliers démontables, bagues hydrolubes, accouplements, chemises...



## **MOTORISATION**

Echangeurs de température huile/eau, Keel-cooler, U cooler, réfrigérants, propulseurs d'étrave, amortisseurs, additifs huile et carburant, filtration-séparation, anti-friction, échappement, suspension moteur...



## **PROTECTION & EQUIPEMENTS**

Défenses de quai et de bord, listons, protecteurs d'hélices coupe orin, essuie-glace et tous les équipements du catalogue Exalto...



## **PLASTURGIE**

Voiles de verre et de polyester, fils de fibre de verre, feutres aiguilletés de fibre de verre, tissus de verre, roving, mèches, fibres coupées, fibres de filtration...

### **Alphaver Marine-Industrie-Equipements**

Immeuble Le Colbert • 2 rue Le Corbusier • 95190 Goussainville

Tél. : +33 (0)1 43 83 05 59 • Port. : +33 (0)6 67 65 10 43

Fax : +33 (0)1 43 83 96 76 • E-mail : [info@alphaver.com](mailto:info@alphaver.com)

Découvrez notre nouveau site web : [www.alphaver.com](http://www.alphaver.com)